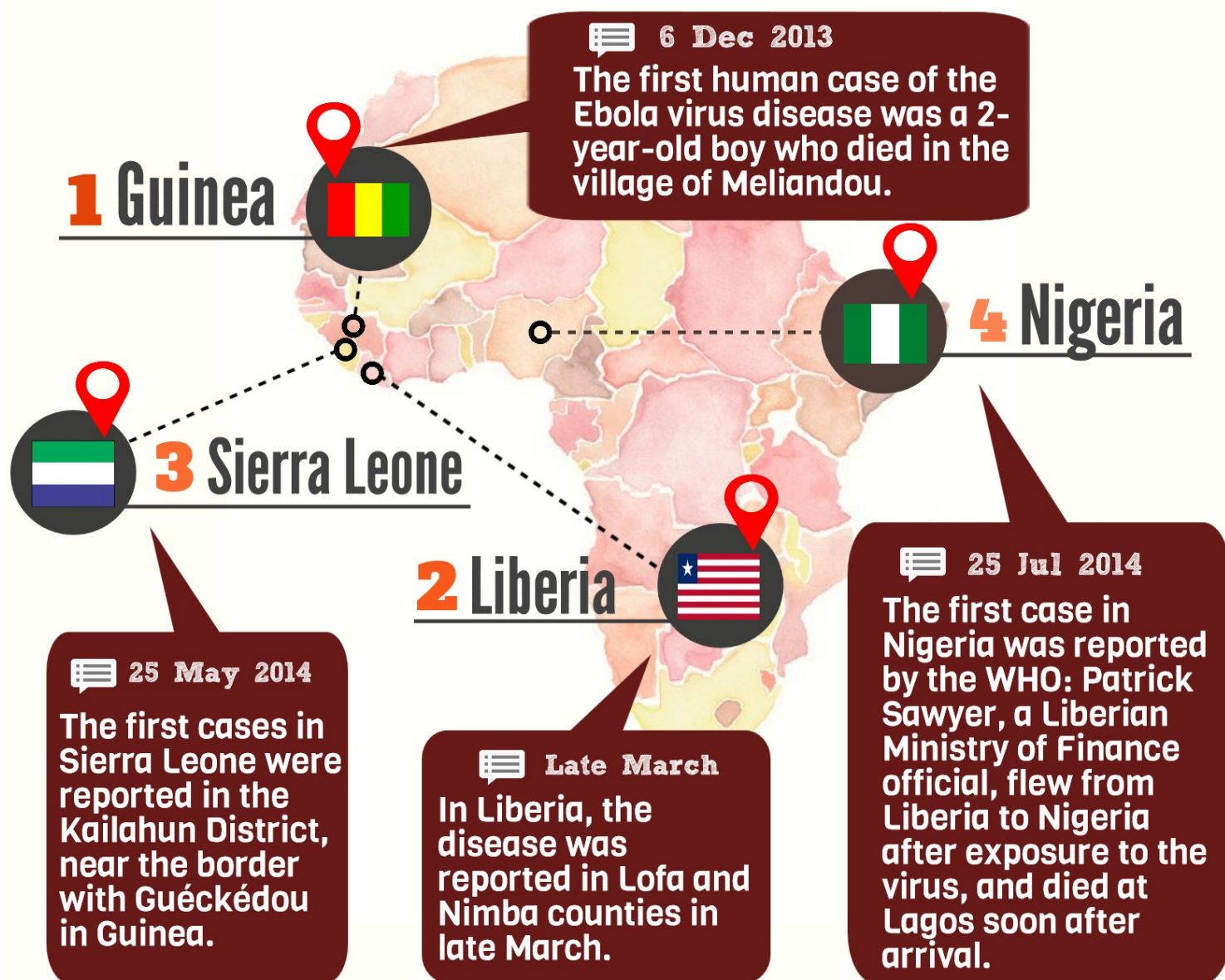


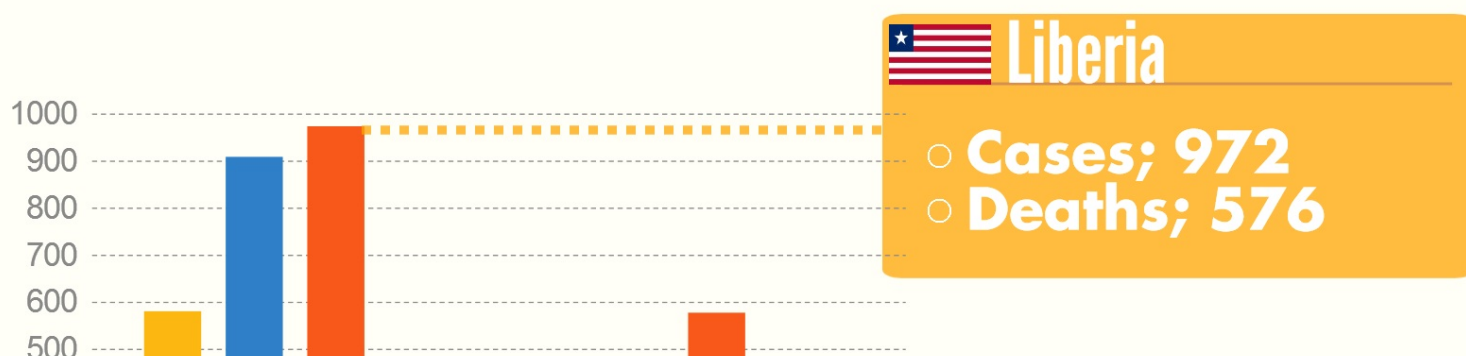
3 Minutes

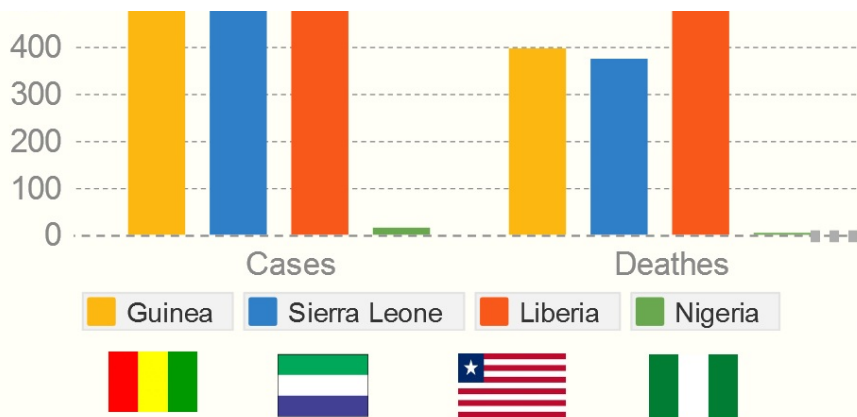
3 STEP GUIDE: EBOLA OUTBREAK 2014

1 Initial and subsequent spread



2 Cases and deaths





Nigeria

○ **Cases; 15**
○ **Deaths; 4**

As of 18 Aug 2014

3 Facts about Ebola

Conjunction routes;

- (1) **Bodily fluids** of a person with Ebola
- (2) **Objects or animals** contaminated with Ebola

Likely host; **Bat**



Symptoms;

- (1) **Fever**
- (2) **Head ache**
- (3) **Stomach ache**
- (4) **Bleeding**



Incubation period;

2-21 Days



Fatality rate;

55-60%



sources

2014 West Africa Ebola virus outbreak - Wikipedia;
http://en.wikipedia.org/wiki/2014_West_Africa_Ebola_virus_outbreak

International SOS; https://www.internationalsos.com/ebola/index.cfm?content_id=397&language_id=ENG

Ebola virus disease - WHO; <http://www.who.int/mediacentre/factsheets/fs103/en/>



YOSO-Walk

<http://www.yoso-walk.net>